

## RESIDENTIAL MOLDED WOOD



Corrosion proof, self aligning hardware

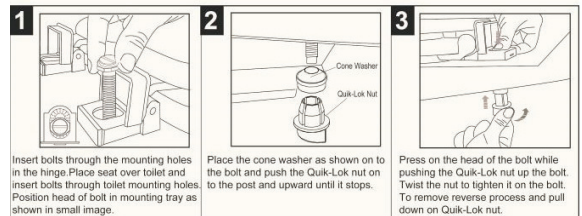


Factory-installed "living" hinge covers with stainless steel screws

### Seat shall be PLUMBTECH™ MODEL - 103

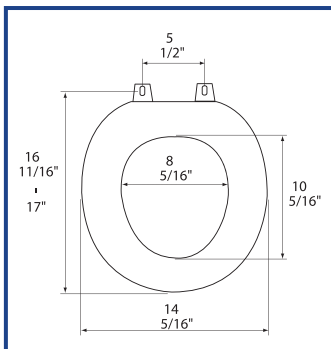
- Builder grade durable molded wood
- Round closed front with cover
- Multi-coat high gloss enamel paint with sealer and primer
- UV paint color protection
- Contractor quality Vari-Adjust™ and Lok-Down™ top mount hinge
- Color matching hinge and bumpers
- Four bumpers on ring for stability
- Pre-assembled non-skid rubberized pads
- Assembled with corrosion resistant stainless steel screws
- Corrosion proof Quik-Lok™ POM nuts and bolts
- Specify white -00

#### Quik-Lok™ Installation Instruction



**1**  
Year Limited  
Warranty!

## PRODUCT SPECIFICATIONS



### Residential

**Model 103 - For ANSI Standard Round Front Toilets**

**Style: Closed Front with Cover**

**Material: Molded Wood (wood flour and resin)**

**Hinge: Heavy Duty Plastic Hinge with Stainless Steel Screws**

**Height of seat: 2 1/4"**

**Ring Thickness: 3/4"**

**Ring Thickness with Bumpers: 1 1/8"**

**PLUMBTECH™ molded wood seats utilize the finest paint to seal and beautify the molded wood core with deep lustrous color and rock hard enamel durability.**