

# **New Plastic Seats Designed for Residential, Remodel and Hospitality Applications**

by:

# **PLUMBTECH™**



**Model 206 Elongated**



**Model 205 Round**



# What are the Needs and Opportunities for Residential/Builder Quality Plastic Seats?

- The residential market is always evolving and searching for ways and means to bend the cost curve while maintaining the overall quality of the final product.
- The hospitality segment has similar needs, especially for a highly durable, stylish modern design, that is easy to install and maintain, and budget friendly.
- Additionally, consumers and homeowners are more conscious than ever regarding extra styling and new features.
- Our market surveys indicate as much as 50% of new home owners are replacing the toilet seats installed by the contractor within weeks of purchasing the home.
- Nearly all bathroom remodels involve replacing the toilet seat.
- The overwhelming majority of these replacement seats are purchased in retail stores or online.
- The clear goal is to provide plumbing wholesalers with an upgrade plastic seat, with premium features that meet the consumer and contractor demands and budgets.

# PLUMBTECH™



PLUMBTECH Model 206-00.  
Elongated Plastic  
Suggested List: \$30.00



PLUMBTECH Model 205-00.  
Round Front Plastic  
Suggested List: \$25.00



1

*One Year Limited Warranty!*



## Features and Benefits of PLUMBTECH Deluxe Plastic Models 205 & 206

- **Constructed of 100% virgin polypropylene-no fillers, extenders, or regrind.**
- **Strong & Durable - injection molded, high impact, chemically resistant.**
- **Ergonomically designed seat ring with contour provides greater comfort and support.**
- **Specially designed cover resists flexing, or “oil canning”.**
- **Release-N-Clean™ hinge for easy mounting and cleaning.**
- **Corrosion proof Quik-Lok™ POM nuts, bolts and washers.**
- **Vari-Adjust™ with Lok-Down™ adjustable hinges for a perfect, solid fit on any standard ANSI toilet bowl.**
- **Heavy Duty Contractor Hinge.**
- **Molded in bumpers for added safety and comfort.**
- **Easy, self aligning, top mount installation with Quik-Lok™ hardware.**
- **UV Ingredient to maintain color**
- **Meets and exceeds ANSI Quality Standards**

*“Why pay the same or more, for less quality and features?”*

# Quik-Lok™



- UP TO 6X FASTER INSTALLATION!
- Save 50% to 80% of your time-LABOR COST.
- Increased productivity - install in less than a minute.

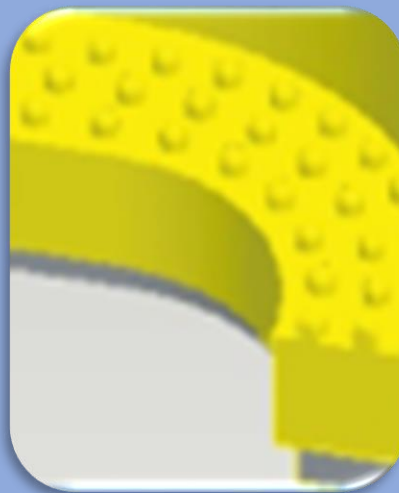
 No tools necessary for installation!

## Simple Fast Easy

## Vari-Adjust™ with Lok-Down™ Adjustable Hinges and Release N Clean™



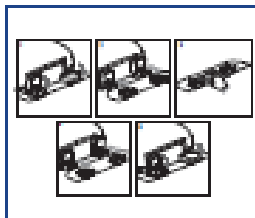
Compression “Dots” lock seat in place for added stability.



Models 205/206 are available in White only.

Plumbing Technologies LLC, [plumbtechseats.com](http://plumbtechseats.com)  
Email: [customerservice@plumbtechseats.com](mailto:customerservice@plumbtechseats.com) Phone: 973-998-9778  
Fax: 973-998-9780 or 973-947-6458

## RESIDENTIAL PLASTIC



Release 'N' Clean™

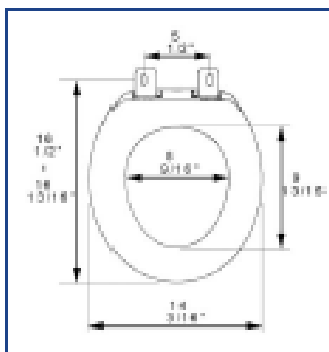


Factory-installed "living"  
hinge covers

### Seat shall be PLUMBTECH™ MODEL - 205

- Builder grade residential round closed front with cover
- Injection molded durable polypropylene plastic with UV protection
- Round closed front with cover
- Molded in bumpers
- Contractor quality matching Vari-Adjust™ Lok-Down™ Release 'N' Clean™
- Corrosion proof POM nuts, bolts and washers
- Top mount design
- Accepts 304 stainless steel 200HPSS mounting hardware
- Non-skid rubberized pads are pre-installed hinge
- Specify white -00

## PRODUCT SPECIFICATIONS



Residential

Model 205 - For ANSI Standard Round Front Toilets

Style: Closed Front with Cover

Material: Polypropylene Plastic

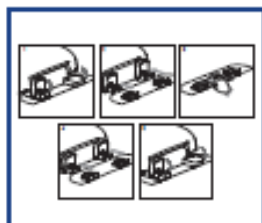
Hinge: Contractor Quality Heavy Duty Plastic Hinge

Height of seat: 1 3/4"

Ring Thickness: 1/2"

Ring Thickness with Bumpers: 9/16"

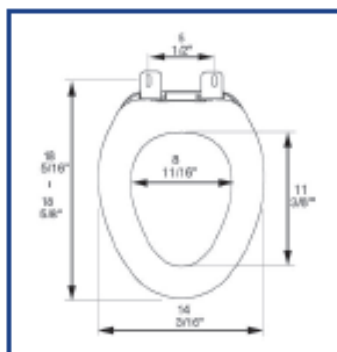
PLUMBTECH™ plastic seats utilize high grade virgin polypropylene plastic.  
Complies with ANSI Standard Z124.5 Section 5.1.2

**RESIDENTIAL PLASTIC**

Release 'N' Clean™

Factory-installed "living"  
hinge covers**Seat shall be PLUMBTECH™  
MODEL - 206**

- Builder grade residential elongated closed front with cover
- Injection molded durable polypropylene plastic with UV protection
- Round closed front with cover
- Molded in bumpers
- Contractor quality matching Vari-Adjust™ Lok-Down™ Release 'N' Clean™
- Corrosion proof POM nuts, bolts and washers
- Top mount design
- Accepts 304 stainless steel 200HPSS mounting hardware
- Non-skid rubberized pads are pre-installed hinge
- Specify White -00

**PRODUCT SPECIFICATIONS****Residential****Model 206 - For ANSI Standard Elongated Toilets****Style: Closed Front with Cover****Material: Polypropylene Plastic****Hinge: Contractor Quality Heavy Duty Plastic Hinge****Height of seat: 1 3/4"****Ring Thickness: 1/2"****Ring Thickness with Bumpers: 9/16"****PLUMBTECH™ plastic seats utilize high grade virgin polypropylene plastic.  
Complies with ANSI Standard Z124.5 Section 5.1.2**