

Standard+ Residential Molded Wood Seats Designed for Durability and Ease of Installation.

by:

PLUMBTECH™



Model 110 Elongated



Model 109 Round

1

One Year Limited Warranty!



What Is The Need and Opportunity for Standard+ Grade Molded Wood Seats?

- Consumer and contractor demand is still in high with a strong preference for molded wood toilet seats in North America.
- In the last 15-20 years the average consumer's ideal price point for a good quality seat has increased from \$15-20 to \$30-60.
- Segments of pros and consumers have preferences for low cost combined with simplicity and fast, easy installation.
- One goal is to provide Plumbing Wholesalers with an exclusive, competitive residential seat, that is not available at retail.
- The other goal is to provide Plumbing Wholesalers with a quality molded wood seat, with features that consumers and contractors demand, at a competitive advantage.

PLUMBTECH™



PLUMBTECH Model 110-00
Elongated Molded Wood Seat.
Suggested List: \$29.00



PLUMBTECH Model 109-00
Round Front Molded Wood Seat.
Suggested List: \$23.00



Features and Benefits of PLUMBTECH Models 109 & 110

- **Strong & Durable - High quality molded wood.**
- **Six layers of paint finish with sealer and primer.**
- **High content of resins to create a rock hard wood core and extended life.**
- **Assembled with corrosion resistant stainless steel screws.**
- **Vari-adjust™ with Lok-Down™ adjustable hinges for a perfect, secure fit on any standard ANSI toilet bowl.**
- **Ergonomically designed seat ring provides comfort and support.**
- **Four bumpers on elongated seat ring for extra stability.**
- **Corrosion proof Quik-Lok™ POM nuts, bolts and includes pre-assembled non-skid rubberized pad.**
- **Fast and easy to install, with NO TOOLS required.**
- **Easy, self aligning, top mount installation with Quik Lok™ hardware.**
- **UV Ingredient to maintain color.**
- **Color coordinated hinge and bumpers.**
- **Meets and exceeds ANSI Quality Standards.**

“Why pay the same or more, for less quality and features?”

Quik-Lok™



- UP TO 6X FASTER INSTALLATION!
- Save 50% to 80% of your time-LABOR COST.
- Increased productivity - install in less than a minute.

 No tools necessary for installation!

Simple Fast Easy

Vari-Adjust™ with Lok-Down™ Adjustable Hinges



Compression “Dots” lock seat in
place for added stability.

Model 109 and 110 are available in White.

Plumbing Technologies LLC, plumbtechseats.com
Email: customerservice@plumbtechseats.com Phone: 973-998-9778
Fax: 973-998-9780 or 973-947-6458

RESIDENTIAL MOLDED WOOD

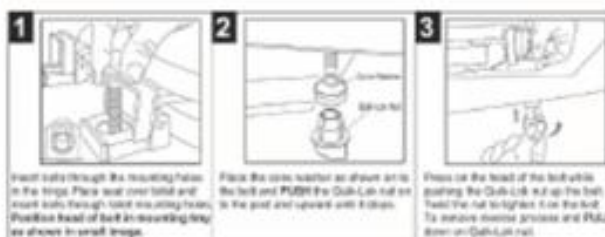
Seat shall be PLUMBTECH™ MODEL - 109

- Standard quality durable molded wood
- Round closed front with cover
- Multi-coats of high gloss enamel paint with sealer and primer
- UV paint color protection
- Color coordinated hinge and bumpers
- Assembled with corrosion resistant stainless steel screws
- Corrosion proof nuts and bolts
- Specify white -00
- Quik-Lok Installation technology
- No tools required installation
- Vari-Adjust Lok-Down hinge includes pre-assembled non-skid rubberized pad

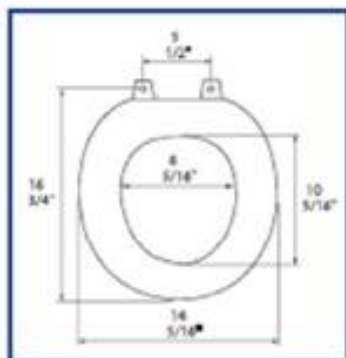


Factory-installed "living" hinge covers with stainless steel screws

Quik-Lok™ Installation Instruction



PRODUCT SPECIFICATIONS



Residential

Model 109 - For ANSI Standard Round Front Toilets

Style: Closed Front with Cover

Material: Molded Wood (wood flour and resin)

Hinge: Plastic Hinge assembled with Stainless Steel Screws

Height of seat: 2"

Ring Thickness: 5/8"

Ring Thickness with Bumpers: 1"

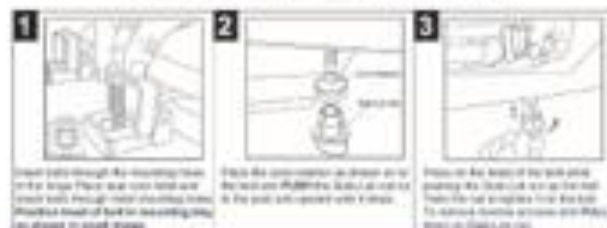
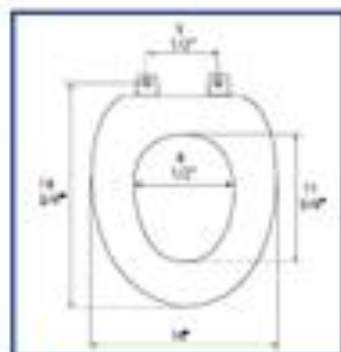
PLUMBTECH™ molded wood seats utilize the finest paint to seal and beautify the molded wood core with deep lustrous color and rock hard enamel durability.

RESIDENTIAL MOLDED WOOD**Seat shall be PLUMBTECH™
MODEL - 110**

- Standard quality durable molded wood
- Elongated closed front with cover
- Multi-coats of high gloss enamel paint with sealer and primer
- UV paint color protection
- Color coordinated hinge and bumpers
- Assembled with corrosion resistant stainless steel screws
- Corrosion proof nuts and bolts
- Specify white -00
- Quik-Lok installation technology
- No tools required installation
- Vari-Adjust Lok-Down hinge includes pre-assembled non-skid rubberized pad



Factory-installed "living"
hinge covers

Quik-Lok™ Installation Instruction**PRODUCT SPECIFICATIONS**

Residential

Model 110 - For ANSI Standard Elongated Front Toilets

Style: Closed Front with Cover

Hinge: Plastic Hinge assembled with Stainless Steel Screws

Material: Molded Wood (wood flour and resin)

Height of seat: 2"

Ring Thickness: 5/8"

Ring Thickness with Bumpers: 1"

PLUMBTECH™ molded wood seats utilize the finest paint to seal and beautify the molded wood core with deep lustrous color and rock hard enamel durability.