



**Residential / Builder Molded Wood Seats
Designed for Fashion, Comfort, Luxury and
Durability.**

by:



**Elongated Model
LL106QL (C0410)**



**Round Model
LL105QL (C0320)**



Two Year Limited Warranty!



What Is The Need and Opportunity for Residential/Builder Grade Molded Wood Seats?

- Consumer and contractor demand is still in high with a strong preference for molded wood toilet seats in North America.
- In the last 15-20 years the average consumer's ideal price point for a good quality seat has increased from \$15-20 to \$30-60.
- Market surveys indicate as much as 50% of new home owners are replacing the toilet seats that were installed by the building contractor within weeks of purchasing the home, with a premium seat.
- Consumers are demanding better quality seats and upgrade features. The overwhelming majority of these premium seats are purchased in retail stores.
- Residential/Builder grade molded wood seats provide a crossover that meets the expectations of both homeowners, and builders.
- The goal is to provide Locke Supply customers with a premium molded wood seat, with features that consumers and contractors demand, at a competitive advantage.



Luxury Line Model LL106QL
(C0410)
Elongated Molded Wood Seat.
MSRP: \$33.00



Luxury Line Model LL105QL
(C0320)
Round Front Molded Wood Seat.
MSRP: \$24.00




Features and Benefits of Luxury Line Models LL105QL (C0320) & LL106QL (C0410)

- **Strong & Durable - Premium quality molded wood.**
- **Six layers of paint finish with sealer and primer.**
- **Maximum level of resins to create a rock-hard wood core and extended life.**
- **Assembled with corrosion resistant stainless-steel screws.**
- **Release 'N' Clean™ hinges for fast, easy installation and removal for cleaning.**
- **Vari-adjust™ with Lok-Down™ adjustable hinges for a perfect, secure fit on any standard ANSI toilet bowl.**
- **Ergonomically designed seat ring with contour provides greater comfort and support.**
- **Four bumpers on seat ring for extra stability.**
- **Heavy duty contractor grade hinge.**
- **Non-skid rubberized hinge pads.**
- **Corrosion proof Quik-Lok™ POM nuts, bolts and washers.**
- **Easy, self aligning, top mount installation with Quik Lok™ hardware.**
- **STA-PUT™ micro suction cup bumpers minimize movement on the bowl.**
- **UV Ingredient to maintain color**
- **Meets and exceeds ANSI Quality Standards**

Quik-Lok™



- UP TO 6X FASTER INSTALLATION!
- Save 50% to 80% in time-LABOR COST.
- Increased productivity - install in less than a minute.

 No tools necessary for installation!

Simple Fast Easy

STA-PUT™



Stop the Movement of Seats



- Micro-suction cups inhibit the movement of wood toilet seats during normal use.
- Even minimizes the movement of the cover when the bathroom toilet is being used as a chair.

Vari-Adjust™ with Lok-Down™ Adjustable Hinges and Release N Clean™



Compression
“Dots” lock
seat in place
for added
stability.

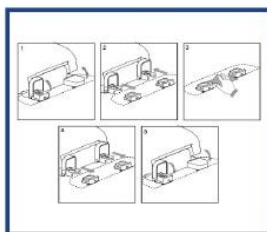


Model LL105QL (C0320) & Model LL106QL (C0410) are available in White.





Factory-installed hinge with stainless steel screws



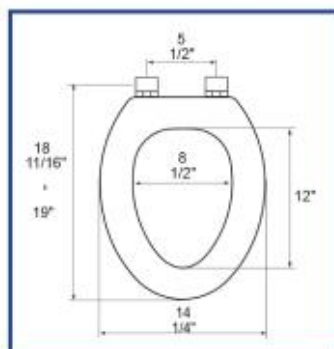
Release 'N' Clean™

RESIDENTIAL MOLDED WOOD Seat shall be **Luxury Line** **MODEL LL-106QL**

- Builder grade durable molded wood.
- Elongated closed front with cover.
- Multi-coat high gloss enamel paint with sealer and primer.
- UV paint color protection.
- Contractor quality adjustable Release 'N' Clean™ top mount hinge.
- Quik-Lok™ fast and easy mounting system requiring no tools.
- Color matching hinges and bumpers.
- Four Sta-put™ bumpers on ring for added stability.
- Two Sta-put™ bumpers on cover for maximum stability.
- Non-skid rubberized pads.
- Assembled with corrosion resistant stainless steel screws.
- Corrosion proof POM nuts and bolts.
- Specify White -00



PRODUCT SPECIFICATIONS



Residential

Model LL-106QL For ANSI Standard Elongated Front Toilets

Style: Closed Front with Cover

Material: Molded Wood (wood flour and resin)

Hinge: Heavy Duty Plastic Hinge with Stainless Steel Screws

Height of seat: 2 1/4"

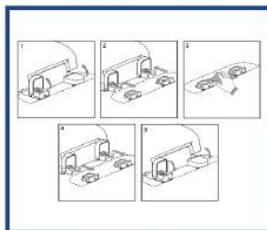
Ring Thickness: 3/4"

Ring Thickness with Bumpers: 1 1/8"

Luxury Line molded wood seats utilize the finest paint to seal and beautify the molded wood core with deep lustrous color and rock hard enamel durability.



Factory-installed hinge with stainless steel screws



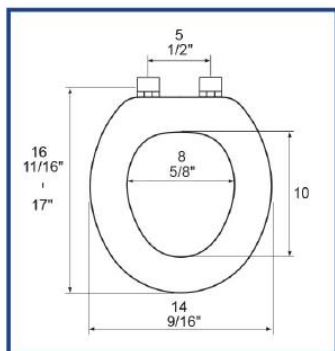
Release 'N' Clean™

RESIDENTIAL MOLDED WOOD Seat shall be **Luxury Line** **MODEL LL-105QL**

- Builder grade durable molded wood.
- Round closed front with cover.
- Multi-coat high gloss enamel paint with sealer and primer.
- UV paint color protection.
- Contractor quality adjustable Release 'N' Clean™ top mount hinge.
- Quik-Lok™ fast and easy mounting system requiring no tools.
- Color matching hinges and bumpers.
- Four Sta-put™ bumpers on ring for added stability.
- Two Sta-put™ bumpers on cover for maximum stability.
- Non-skid rubberized pads.
- Assembled with corrosion resistant stainless steel screws.
- Corrosion proof POM nuts and bolts.
- Specify White -00



PRODUCT SPECIFICATIONS



Residential

Model LL-105QL For ANSI Standard Round Front Toilets

Style: Closed Front with Cover

Material: Molded Wood (wood flour and resin)

Hinge: Heavy Duty Plastic Hinge with Stainless Steel Screws

Height of seat: 2 1/4"

Ring Thickness: 3/4"

Ring Thickness with Bumpers: 1 1/8"

Luxury Line molded wood seats utilize the finest paint to seal and beautify the molded wood core with deep lustrous color and rock hard enamel durability.