

**Premium Metal Hinge Wood
Seats designed for fashion,
comfort, luxury and durability.**

by:

PLUMBTECH™



Model 1C3E4 Elongated



Model 1C3R4 Round



What Is The Need and Opportunity for Premium Molded Wood Seats?

- Consumer demand is still in excess of 60% for molded wood toilet seats in North America.
- In the last 15-20 years the average consumer's ideal price point for a good quality seat has increased from \$15-20 to \$30-40.
- Our market surveys indicate as much as 50% of new home owners are replacing the toilet seats that were installed by the building contractor within weeks of purchasing the home, with a premium seat.
- Consumers are demanding better quality seats and upgrade features. The overwhelming majority of these premium seats are purchased in retail stores.
- The goal is to provide Plumbing Wholesalers with a premium molded wood seat, with features that consumers and contractors demand, at a competitive advantage.

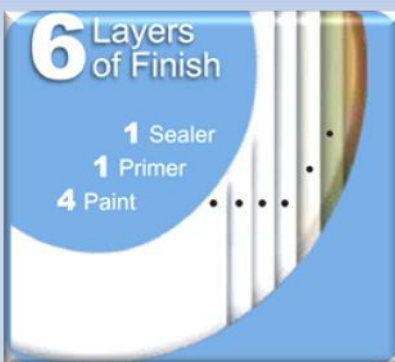
PLUMBTECH™



PLUMBTECH Model 1C3E4-00
Premium Elongated Wood
Seat with Metal Hinges.
Suggested List: \$39.00



PLUMBTECH Model 1C3R4-00
Premium Round Front Wood
Seat with Metal Hinges.
Suggested List: \$38.00



2

Two Year Limited Warranty!

Features and Benefits of PLUMBTECH Models 1C3E4 & 1C3R4

- **Plated metal hinge with non-corrosive self aligning mounting hardware.**
- **Strong & Durable - Premium quality molded wood.**
- **Six layers of paint finish with sealer and primer.**
- **Maximum level of resins to create a rock hard wood core and extended life.**
- **Assembled with corrosion resistant stainless steel screws.**
- **OSG - Odor Stain Guard ingredient in paint**
- **Ergonomically designed seat ring with contour provides greater comfort and support.**
- **Four bumpers on seat ring for extra stability.**
- **UV Ingredient to maintain color**
- **Meets and exceeds ANSI Quality Standards**

“Why pay the same or more, for less quality and features?”

STA-PUT™ Bumpers

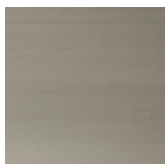


Stop the Movement of Seats



- Micro-suction cups inhibit the movement of wood toilet seats during normal use.
- Even minimizes the movement of the cover when the bathroom toilet is being used as a chair.

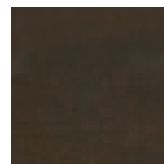
Models 1C3E4-00 and 1C3R4-00 are available in White, with hinge finish choices of Chrome (CH), Brushed Nickel (BN), or Oil Rubbed Bronze (OB). Both models are also available in Black with Chrome (-90CH) hinges.



BN Brushed
Nickel



CH Chrome



OB Oil
Rubbed
Bronze

Plumbing Technologies LLC, plumbtechseats.com
Email: customerservice@plumbtechseats.com Phone: 973-998-9778
Fax: 973-998-9780 or 973-947-6458

RESIDENTIAL MOLDED WOOD

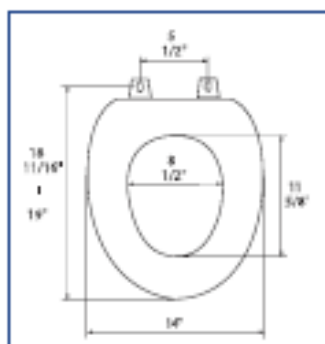


Hinge Finishes

Seat shall be BATHDÉCOR™ MODEL - 1C3E4

- Durable molded wood
- Elongated closed front with cover
- Multi-coat high gloss enamel paint with sealer and primer
- UV paint color protection
- OSG - Odor Stain Guard ingredient in paint
- Plated metal hinge with non-corrosive self aligning mounting hardware
- Four bumpers on ring for stability
- Non-skid rubberized washer
- Assembled with corrosion resistant stainless steel screws
- Corrosion proof mounting hardware
- Includes free installation tool
- Color coordinated bumpers
- Specify white -00 or black -90
- Specify hinges - brushed nickel and oil rubbed bronze only available in white, or chrome available in white and black

PRODUCT SPECIFICATIONS



Residential

Model 1C3E3 - For ANSI Standard Elongated Toilets

Style: Closed Front with Cover

Material: Molded Wood (wood flour and resin)

Hinge: Extra Heavy Duty Plastic Hinge with Metal Finished Cap

Height of seat: 2 1/4"

Ring Thickness: 3/4"

Ring Thickness with Bumpers: 1 1/8"

BATHDÉCOR™ molded wood seats utilize the finest paint to seal and beautify the molded wood core with deep lustrous color and rock hard enamel durability.

RESIDENTIAL MOLDED WOOD

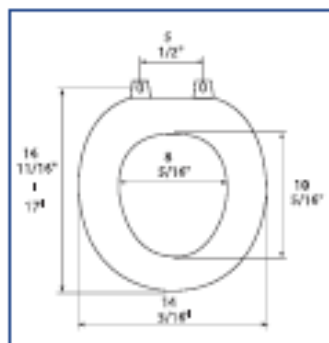


Hinge Finishes

Seat shall be BATHDÉCOR™ MODEL - 1C3R4

- Round front closed front with cover
- Durable molded wood
- Multi-coat high gloss enamel paint with sealer and primer
- UV paint color protection
- OSG - Odor Stain Guard ingredient in paint
- Plated metal hinge with non-corrosive self aligning mounting hardware
- Four bumpers on ring for stability
- Non-skid rubberized washer
- Assembled with corrosion resistant stainless steel screws
- Corrosion proof mounting hardware
- Includes free installation tool
- Color coordinated bumpers
- Specify white -00 or black -90
- Specify hinges - brushed nickel and oil rubbed bronze only available in white, or chrome available in white and black

PRODUCT SPECIFICATIONS



Residential

Model 1C3R4 - For ANSI Standard Round Front Toilets

Style: Closed Front with Cover

Material: Molded Wood (wood flour and resin)

Hinge: Extra Heavy Duty Plastic Hinge with Metal Finished Cap

Height of seat: 2 1/4"

Ring Thickness: 3/4"

Ring Thickness with Bumpers: 1 1/8"

BATHDÉCOR™ molded wood seats utilize the finest paint to seal and beautify the molded wood core with deep lustrous color and rock hard enamel durability.