

# Residential Soft Seats Designed for Fashion, Comfort, Luxury and Durability.

by:

# PLUMBTECH™



**Model 6C3E2 Elongated**



**Model 6C3R2 Round**

**1**

*One Year Limited Warranty!*



## **What Is The Need and Opportunity for Residential Soft Seats?**

- In the last 15-20 years the average consumer's ideal price point for a good quality seat has increased from \$15-20 to \$30-60, and up.
- Our market surveys indicate as much as 50% of new home owners are replacing the toilet seats that were installed by the building contractor within weeks of purchasing the home, with a premium seat.
- Consumers are demanding better quality seats and upgrade features, such as soft seats. The overwhelming majority of these premium seats are purchased in retail stores.
- The goal is to provide Plumbing Wholesalers with a high quality soft seat, with features that consumers and contractors demand, at a competitive advantage.



# PLUMBTECH™



PLUMBTECH Model 6C3E2  
Soft Seat Elongated.  
Suggested List: \$49.73



PLUMBTECH Model 6C3R2  
Soft Seat Round Front.  
Suggested List: \$42.50



1

*One Year Limited Warranty!*



## Features and Benefits of PLUMBTECH Models 6C3E2 & 6C3R2

- Premium extra heavy duty embossed leather design vinyl.
- Adjustable Release 'N' Clean™ hinges.
- Color coordinated hinges and bumpers.
- Assembled with corrosion resistant stainless steel screws.
- Solid wood core construction for added stability.
- Vari-adjust™ with Lok-Down™ adjustable hinges for a perfect, secure fit on any standard ANSI toilet bowl.
- OSG - Odor Stain Guard ingredient in vinyl.
- Heavy duty high density foam.
- Four bumpers on seat ring for extra stability.
- Meets and exceeds ANSI Quality Standards

*“Why pay the same or more, for less quality and features?”*

## **Vari-Adjust™ with Lok-Down™ Adjustable Hinges and Release N Clean™**



Compression  
“Dots” lock  
seat in place  
for added  
stability.



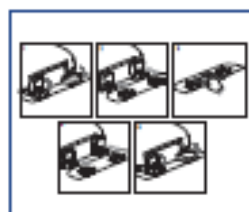
**6C3R2 is available in White and Bone.  
6C3E2 is available in White.**

Plumbing Technologies LLC, [plumbtechseats.com](http://plumbtechseats.com)  
Email: [customerservice@plumbtechseats.com](mailto:customerservice@plumbtechseats.com) Phone: 973-998-9778  
Fax: 973-998-9780 or 973-947-6458



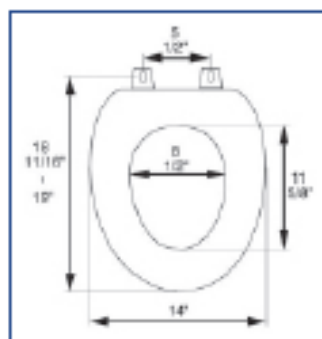
### Seat shall be BATHDÉCOR™ MODEL - 6C3E2

- Premium extra heavy duty embossed leather design vinyl
- Adjustable Release 'N' Clean™ hinge
- Color coordinated hinges and bumpers
- Assembled with stainless steel screws
- OSG™ - Odor Stain Guard in vinyl
- Heavy duty high density foam
- Non-Corrosive self-aligning hardware
- UV protection
- Top mount design
- Solid wood core construction for added stability
- Closed front with cover design/style
- Specify white -00 or bone -01



Release 'N' Clean™

## PRODUCT SPECIFICATIONS



Residential

Model 6C3E2 - For ANSI Standard Elongated Toilets

Style: Closed Front with Cover

Material: PVC vinyl and foam and molded wood

Hinge: Adjustable Release 'N' Clean™ top mount

Height of seat: 3 1/2"

Ring Thickness: 1 1/8"

Ring Thickness with Bumpers: 1 1/2"

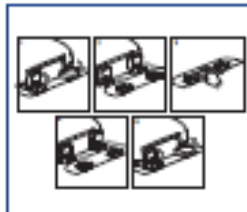
BATHDÉCOR™ premium soft seats utilize extra heavy duty embossed vinyl and foam to wrap a molded wood toilet seat. The combination adds durability and comfort.





### Seat shall be BATHDÉCOR™ MODEL - 6C3R2

- Premium extra heavy duty embossed leather design vinyl
- Adjustable Release 'N' Clean™ hinge
- Color coordinated hinges and bumpers
- Assembled with stainless steel screws
- OSG™ - Odor Stain Guard in vinyl
- Heavy duty high density foam
- Non-Corrosive self-aligning hardware
- UV protection
- Top mount design
- Solid wood core construction for added stability
- Closed front with cover design/style
- Specify white -00, bone -01, pink -21, claret -25, blue -41, forest green -60, or black -90

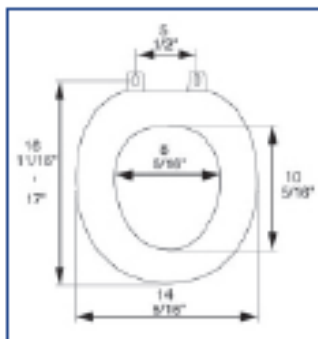


Release 'N' Clean™

#### COLORS



## PRODUCT SPECIFICATIONS



Residential

Model 6C3R2 - For ANSI Standard Round Front Toilets

Style: Closed Front with Cover

Material: PVC vinyl and foam and molded wood

Hinge: Adjustable Release 'N' Clean™ top mount

Height of seat: 3 1/2"

Ring Thickness: 1 1/8"

Ring Thickness with Bumpers: 1 1/2"

BATHDÉCOR™ premium soft seats utilize extra heavy duty embossed vinyl and foam to wrap a molded wood toilet seat. The combination adds durability and comfort.